



Create a luxurious starry night almost anywhere

Create a starry night on your bedroom, bathroom or any room in the house by using our fiber optic star ceiling kit on your ceiling.

Consisting of mixed diameter fiber for a 'near + far' effect, each fiber optic star kit comes with small acrylic fittings for a neat finish in the ceiling or chosen material. Unlike other systems on the market, these fittings allow for the fiber to pass all the way through, maintaining the preferred intense star effect achieved when the fiber end is exposed while covering up any ragged edges from the drill hole. Alternatively, drill 1mm holes in the ceiling and just use the fibers on their own for an intense point of light.

These fiber optic kits are usually installed in:

- Ceilings – access is required from above, or fibers can be installed into a section of
- MDF or plasterboard in a new ceiling prior to it being elevated and lifted into place;
- Drapes – pierce the material and apply silicone to the back;
- Tiling – tails can be installed in grout between tiles.

Our Standard Kit contains:-

Harness

Illuminator

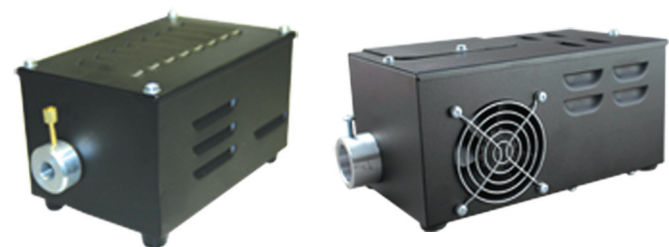
End Fittings

Full installation guide





Unlimited Light offer 3 standard tungsten halogen illuminators in these kits - 35W, 50W, 75W. Alternatively, upgrade to one of our new MicroLED illuminators. These tiny but powerful boxes combine the efficiency of LED with amazing color changing effects. The MicroLED 4000 also offer full remote control with fingertip access to any static color or color cycle effect.



35W, 50W or 75W tungsten halogen unit with 1 plug. As standard these illuminators output continuously changing colours. The colorwheel can be removed to allow for static white light output.



The MicroLED range, available as an optional upgrade. MicroLED 1000, with built in controls to control color selection and effects. Dimensions: 5.2” (L) x 3.8” (W) x 2.6” (H) MicroLED 4000, with full remote control over colors and effects. Dimensions: 5.4” (L) x 4.5” (W) x 2.9”(H)



Fiber optic harness - This will be supplied with tail lengths from 1.25m to 7.5m depending upon the kit you choose. The harness is made of mixed diameter fiber - 0.75mm and 1.0mm - to give a near and far effect.



Star bullet lenses are supplied with these kit. These can be fitted on the fiber ends for decorative effect or to hide unevenly drilled holes

Name	Standard Illuminator	Number of Tails	Length	Power Supply	Tungsten Halogen Illuminator Dimensions
SS112	35W	112 tails	4.1' - 6.56' (1.25m - 2.0m)	One 110v power supply	(L)7.1" x (W)3.9" x (H)4.1"
SS112+1	35W	112 tails	7.4' - 9.8' (2.25m - 3.0m)	One 110v power supply	(L)7.1" x (W)3.9" x (H)4.1"
MS168	50W	168 tails	6.6' - 9.8' (2.0m - 3.0m)	One 110v power supply	(L)11.3" x (W)6.1" x (H)4.7"
LS224	75W	224 tails	3.28' - 14.8' (1.0m - 4.5m)	One 110v power supply	(L)11.3" x (W)6.1" x (H)4.7"
XLS336	75W	336 tails	6.56' - 24.6' (2.0m - 7.5m)	One 110v power supply	(L)11.3" x (W)6.1" x (H)4.7"